

# Smoke Signal

**CHATSWORTH HISTORICAL SOCIETY**

10385 Shadow Oak Drive, Chatsworth, CA 91311

(818) 882-5614

chatsworthhistory@gmail.com

www.chatsworthhistory.com



Co-Presidents: Linda & André van der Valk

September 2017, Issue #4

Editor: Ann Vincent

## Co-Presidents' Message

By Linda & André van der Valk

Chatsworth Park South has been re-opened. Councilmember Englander held a grand opening on August 31st. Everyone was excited to see the park for the first time in 9 1/2 years. It is not the park as we all knew it but it is open and ready for families to come and enjoy again. It will take some time for the trees and the vegetation to grow but there are some grass areas to be used for picnics. I have heard from many families that they are very happy with the two new playgrounds. The horse trail has been enhanced with nice looking fencing and it is already being used quite a bit. The recreation center is getting ready to start their sports programs and programs in general again. Bea Berman has already talked to the new director about starting a senior program there.

We have a proposed Eagle Scout project for the front of the acre. Jared Strauss of Troop 777 is planning to put in a dry creek bed, vegetation, a tree and a bench on the portion to the west of our gate. Jared is 13 years old and very confident that he can get this project done for the Historical Society. We are very appreciative that he has picked the acre for his project.

Ann Vincent is busy preparing for Pioneer Day. We are hoping that you come out and support us at Pioneer Day and also come out and see the park.

Linda and André



Chatsworth Historical Society  
Board of Directors 2017-2018

Co-Presidents .....	Linda & André van der Valk
Treasurer.....	Jim Van Gundy
Secretary.....	Donna Nachtrab
Hospitality.....	Jelena Csanyi
Smoke Signal Editor.....	Ann Vincent
Museum Curator.....	Virginia Watson
Cottage Curator.....	Betty Summers
Research Director.....	Ray Vincent
Garden Director.....	Annette Campbell
Director-at-Large.....	Connie Ager
Honorary Member.....	Bea Berman
Honorary Member.....	Elaine Campbell

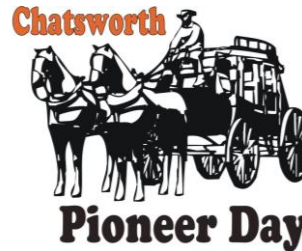
## Upcoming Events

### General Meetings

**There is no General Meeting scheduled for September.**

**October 1, 2017 Sunday 11-3**

### PIONEER DAY



### Pioneer Day

This is our big fundraiser, and we need your support to help our volunteers maintain the Acre and Museum for the future! Bring friends and family to share our history and wonderful community event. Mark your calendar and plan to be there.

**October 17, 2017 Tuesday 7:00 PM**

### General Meeting

Come join us for a fun presentation on the antique Glass Lantern Slides used by the Chatsworth Park Elementary School over 80 years ago. Subjects include Explorers, Pioneers and the Gold Rush. See the preview later in this newsletter.

## **DOCENT DOINGS at the ACRE:**

Our docents keep busy with projects throughout the year. We meet every Wednesday morning 9-noon.

**OUT IN THE GARDEN:** Annette and Karyne can be found dead-heading roses and hand watering plants as needed every Wednesday morning. If you need some outdoor fresh air therapy, come join them! Nadia Harding has been working with



Annette and Karyne. She has created a beautiful butterfly garden with milkweed plants. We are now finding lots of Monarch butterflies in our garden.

Our front entrance just outside the gate will be part of an Eagle Project activity for Troop 777, Scout Jared Strauss. We look forward to his assistance to come up with a plan to improve that area.

**IN THE MUSEUM:** Linda van der Valk is continuously working with the items donated to the museum by our members and the community. Marcia Cropp has volunteered and is working hard to create an inventory of all of our movies on hand (DVD, VHS and more). This is a big project that will be a great asset to our archives.

As a continuous improvement to our archive storage, our stored items are being repacked into new storage boxes. This has been a fun opportunity to revisit items that we have on hand for future displays...or some that have been displayed a long time before I joined the group. Some of these items include some clothing such as boned corsets, hats,

gloves and of course a shoe collection. All of these items had been donated by some of our earliest pioneer families and our founding Chatsworth Historical Society members.

While rearranging some of the items, a black box containing a 1937 Remington Monarch Pioneer typewriter was discovered. We have now put this typewriter on display in our cottage.



All of these items have been logged into our museum catalog system, but for many of us now working with the collection everything we see for the first time is a new treasure.

**IN THE COTTAGE:** An inventory project is still underway to confirm and learn more about the items on display and their history so we can provide more information on our tours.

**DOCENTS ARE NEEDED:** Help guide guests through the museum and cottage during our Open Houses and Special Events. If you would like to learn the history of our community and help share it with others, then contact us for more information at [chatsworthhistory@gmail.com](mailto:chatsworthhistory@gmail.com).

## **Jim Summers 1927- 2017**



Jim Summers passed away on Sept 4 a few weeks short of 90 years. He and his wife Betty have been longtime supporters and docents with the Chatsworth Historical Society.

Jim and Betty spent lots of time working in our gardens. One of my favorite photos is of Jim feeding the squirrels out of his hand. We were fortunate to have had the opportunity to interview and video tape Jim telling his stories about growing up here in Chatsworth as a young boy. As a child, their family lived in the old Gray Mansion on Lassen, farming the orchards and fields surrounding the

home. One of the most important stories he shared with us was about surviving the Saint Francis Dam as an infant with his parents riding out the flood perched in a tree.

Jim was able to tell us stories about the Chatsworth Park School, boy scouts trips, and early Chatsworth families he grew up with. Recently Andre and Linda picked up Betty and Jim and brought them over to the Acre to visit before they left their home and the area to move into assisted living near their son.

It was a wonderful opportunity to reminisce about their many years in Chatsworth.

**27th Annual  
Chatsworth Historical Society**

# Pioneer Day

Sunday, Oct. 1, 2017

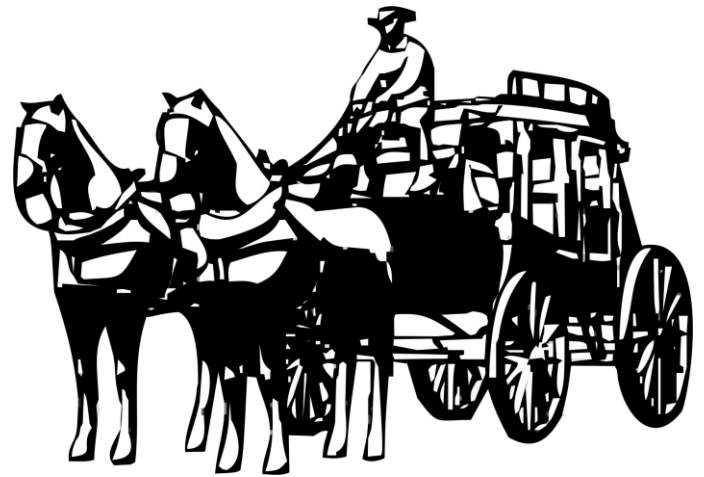
11 a.m. to 3 p.m.

Bring your children  
& grandchildren

Take the  
Pioneer  
Challenge

## ***Old-time fun for everyone!***

- Chores and  
Games of Yore
- Vendors
- Bake Sale
- Woodcarvers
- Blacksmith
- Leather Crafts
- Panning for Gold
- Spinning Wheel Demo
- Veteran Quilt Display
- Design a Quilt Craft
- Rock Chippers
- Bee Keeping
- Telegraph Station
- Butter Churning  
and more!



### Chatsworth Museum Exhibits

Featuring  
Chatsworth Pioneer Families  
and the  
History of Rocketdyne

### Tour Minnie's 1911 Cottage

Location: Homestead Acre,  
Chatsworth Park South  
(West end of Devonshire St.)  
10385 Shadow Oak Drive, Chatsworth, CA

Information: (818) 882-5614  
chatsworthhistory@gmail.com  
www.chatsworthhistory.com

Donation: Adults: \$5,  
Children: \$1  
(Free for kids under 5)

Park your car at the Chatsworth Train Depot (10038 Old Depot Plaza Road)  
and use our free shuttle service, every 15 minutes from 11 a.m. to 3 p.m.

# THE OWL-BEE BOX

A bee story with a happy ending for friendly Bees.

For over 10 years the Acre has had an empty owl box mounted on the back fence. This type of box would attract barn owls, however if there are horned owls in the area, they are not likely to move in. Our box had gone unoccupied until we recently noticed that bees were going in and out.



At some point in time, a bee hive had developed and filled the entire box mounted 10 feet in the air, with layers of honeycomb. The box was now leaning forward due to the weight of the new hive.

Bee Keeper and Chatsworth Historical Society member Nick Maggiore heard about our situation and volunteered to help rescue the bees. It was just a matter of time before the weight of the box would cause it to fall. A plan was needed to support the box before a rescue could be scheduled and Ray Vincent volunteered to prop it up with a support pole. That didn't go as planned and the slight movement of the box being touched with the top of the pole, caused the stressed and bent 2x2 post supporting it to crack and break. The entire bee box twisted and came down a few feet from Ray who quickly scrambled out of harm's way with only a couple stings to show for it.

Nick rearranged his schedule to come the very next morning to rescue our bees. He came with all the tools he would need to open the box, remove the hive and create a new bee box that could be transported. He was delighted to find that the hive had calmed down from its fall, and the bees were not aggressive. Safely wearing a bee suit, with the use of a "BeeVac" created from a shop vacuum, he set up a new bee box and began vacuuming the bees into the new box. He skillfully began removing the honeycomb layer by layer from the hive while continuing to vacuum off the coating of bees on each layer. Eventually when all the honeycomb was removed the next step was to build the lower section



of the new box using sections of the existing honeycomb.

Nick explained that they had to be reinserted in



the new box in a similar formation as the existing so the bees would not reject it.

Once the honeycomb and bees were sealed up for transport, it was decided that the back of Ray's truck was the best way to safely drive them to their new home.

Nick described the bees that he collected as "sweet" bees (non-aggressive). Nick saved the bees and the honey, and it was a fascinating experience to see him at work. We really appreciate the time and effort to accomplish this task.

*Note: I took these photos from a safe distance with my zoom lens...it was an adventure just to watch this process. Ann*

## LANTERN SLIDES

### Used by Chatsworth Park Elementary School in the early 1900's

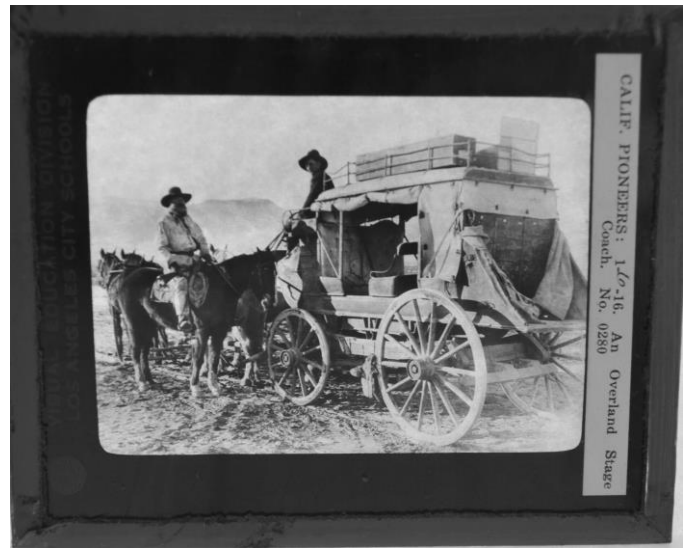
Our October Program will feature these amazing slides and the subjects being taught by our very own Chatsworth Park Elementary School.

Ioline Cleveland was a teacher at Chatsworth Park Elementary School from 1958 to 1984, and was the President of the Chatsworth Historical Society from 1982 to 1986. In 1975 the Chatsworth Park Elementary School Lantern Slides were given to Ioline Cleveland who gave them to the Chatsworth Historical Society for safekeeping. In October of 1988, she wrote the booklet "Chatsworth Park Elementary School – The First One Hundred Years".

In going through the archives, we realized that these lantern slides have not been used for perhaps the last 80 years. Using today's digital technology, we were able to photograph them to share with the community.

The slides are made of two pieces of 3¼" x 4" glass with a photographic or hand drawn image in the middle. We found a 1922 newspaper article about their use in Los Angeles City schools. The article mentions that special cardboard boxes were used to reduce the glass breakage, and describes the boxes seen in the photo to the right.

A photo of a lantern slide projector is shown below.



The slide above says:  
California Pioneers  
(Set)1- (Copy) 6- (Slide)16  
An Overland Stage Coach

Chatsworth Park Elementary School  
Lantern Slide cardboard boxes below.



My favorite slide is the California Pioneers that includes a picture of a corduroy road. You will have to come to the presentation to find out what that is ...if you don't remember from your childhood classes.

## Historic Chatsworth Home – 10538 Topanga Canyon Blvd. – Built One Hundred years ago

This article features a 1917 home on the southeast corner of Andora and Topanga, previously the location of Chatsworth Landscape, and now the home of the Valley Hive.

We are sad to see the previous owners, Randy and Becky Mineo move as they enter retirement. They have been wonderful members and contributors to the Chatsworth Historical Society over the years. Our Garden Festivals will never quite be the same without Randy and Becky showing up with truckloads of plants for our plant sales, with all proceeds going to the Chatsworth Historical Society. We now welcome The Valley Hive at this location. The Valley Hive supports our Pioneer Day event.

We did a little research on the 1917 home, although we could not determine its original owner. The house (outlined in red) is seen in the iconic photo below, of a view of Chatsworth from the Garden of the Gods looking southeast in the 1920's. Okay, we had to really really zoom in!!



In 1928 Jason Long lived at 10538; two years earlier in 1926 he is listed as being on Devonshire, so he may have been the second owner. In 1931 Chatsworth acquired its first full time policeman Charles S. Mulder, who was living there and was also quoted as saying it was the local police headquarters, with telephone OWensmouth 210. A few photos of 10538 Topanga Canyon Blvd. today are below.



## Chatsworth Historical Society Virginia Watson Museum & Gift Shop

The following items are available for sale during Open Houses on the first Sunday of the month. To arrange to purchase items at other times, email [chatsworthhistory@gmail.com](mailto:chatsworthhistory@gmail.com) to make arrangements for payment and shipping, if necessary.

CHATSWORTH HISTORY by Virginia Watson	\$10.00
CHATSWORTH PARK ELEMENTARY SCHOOL The First 100 Years by Ioline Cleveland	\$10.00
WINDOW INTO THE PAST by William Schepler	\$10.00
QUIET ON THE SET by Robert Sherman	\$25.00
OUR PIONEER MOTHER As told to Lenora Johnson MacDonald	\$10.00



**DIGITAL RECORDS online at**  
<http://www.chatsworthhistory.com>

**facebook** CHS FACEBOOK PAGE  
[www.facebook.com/HomesteadAcre](http://www.facebook.com/HomesteadAcre)

**SLIDESHARE.NET**  
<https://www.slideshare.net/ChatsworthHistory/presentations>

Slideshare has a listing of our CHS presentations that can easily be watched online. Enjoy!

### Can we Email our newsletter to you?

Please email us to provide your email address.  
Thanks! [chatsworthhistory@gmail.com](mailto:chatsworthhistory@gmail.com)

### Wondering if your Dues are Due?

Your dues are due one year after the last time you paid your dues.

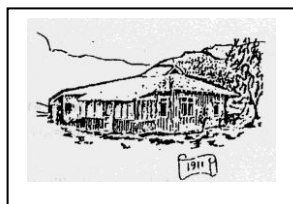
For those receiving email only newsletters, we will advise you by email when your dues are due.

For snail mail, if you have an asterisk at the end of your name on the mailing label, your dues are due.

Please use the form below to renew your Membership. And if your neighbor is not a member yet, pass this newsletter on to them and invite them to join.



### CHATSWORTH HISTORICAL SOCIETY Membership Form



Your membership helps support our Homestead Acre and the educational and historical programs we provide for our community. Members receive our quarterly newsletters, and receive invitation reminders regarding our monthly programs and annual events – Rose Pruning, the Garden Festival, Membership Roundup, and Pioneer Day. Please mail this form with your annual membership dues and/or contribution made payable to:

**Chatsworth Historical Society**, 10385 Shadow Oak Drive, Chatsworth, CA 91311  
[chatsworthhistory@gmail.com](mailto:chatsworthhistory@gmail.com) 818-882-5614 [www.chatsworthhistory.com](http://www.chatsworthhistory.com)

- |                  |   |   |   |
|------------------|---|---|---|
|                  | <input type="checkbox"/> New Member         | <input type="checkbox"/> Renewal        |   |
| Yearly:          | <input type="checkbox"/> Individual \$15.00 | <input type="checkbox"/> Family \$20.00 | <input type="checkbox"/> Organization \$20.00 |
| Life Membership: | <input type="checkbox"/> \$ 125.00          |   |   |

NAME \_\_\_\_\_ Phone: \_\_\_\_\_

STREET ADDRESS: \_\_\_\_\_ Email: \_\_\_\_\_

CITY / STATE / ZIP: \_\_\_\_\_

Special Interest / Expertise: \_\_\_\_\_

**Reminder: If you got this mailed to you, an asterisk on your label means your dues are due!**